




OPEN ACCESS

# Healing of acute anterior cruciate ligament rupture on MRI and outcomes following non-surgical management with the Cross Bracing Protocol

Stephanie R Filbay <sup>1</sup>, Matthew Dowsett,<sup>2</sup> Mohammad Chaker Jomaa <sup>3</sup>, Jane Rooney,<sup>4</sup> Rohan Sabharwal,<sup>5</sup> Phil Lucas,<sup>5</sup> Andrew Van Den Heever,<sup>5</sup> James Kazaglis,<sup>6</sup> Justin Merlino,<sup>6</sup> Mick Moran,<sup>6</sup> Maggie Allwright,<sup>7</sup> Donald E K Kuah,<sup>8</sup> Ra Durie,<sup>9</sup> Greg Roger,<sup>10,11</sup> Mervyn Cross,<sup>12</sup> Tom Cross<sup>12</sup>

► Additional supplemental material is published online only. To view, please visit the journal online (<http://dx.doi.org/10.1136/bjsports-2023-106931>).

For numbered affiliations see end of article.

## Correspondence to

Dr Stephanie R Filbay, Department of Physiotherapy, The University of Melbourne, Melbourne, VIC 3010, Australia; [stephanie.filbay@unimelb.edu.au](mailto:stephanie.filbay@unimelb.edu.au)

Accepted 30 May 2023

## ABSTRACT

**Objective** Investigate MRI evidence of anterior cruciate ligament (ACL) healing, patient-reported outcomes and knee laxity in patients with acute ACL rupture managed non-surgically with the Cross Bracing Protocol (CBP).

**Methods** Eighty consecutive patients within 4 weeks of ACL rupture were managed with CBP (knee immobilisation at 90° flexion in brace for 4 weeks, followed by progressive increases in range-of-motion until brace removal at 12 weeks, and physiotherapist-supervised goal-oriented rehabilitation). MRIs (3 months and 6 months) were graded using the ACL OsteoArthritis Score (ACLOAS) by three radiologists. Mann-Whitney U tests compared Lysholm Scale and ACL quality of life (ACLQOL) scores evaluated at median (IQR) of 12 months (7–16 months) post-injury, and  $\chi^2$  tests compared knee laxity (3-month Lachman's test and 6-month Pivot-shift test), and return-to-sport at 12 months between groups (ACLOAS grades 0–1 (continuous±thickened ligament and/or high intraligamentous signal) versus ACLOAS grades 2–3 (continuous but thinned/elongated or complete discontinuity)).

**Results** Participants were aged 26±10 years at injury, 39% were female, 49% had concomitant meniscal injury. At 3 months, 90% (n=72) had evidence of ACL healing (ACLOAS grade 1: 50%; grade 2: 40%; grade 3: 10%). Participants with ACLOAS grade 1 reported better Lysholm Scale (median (IQR): 98 (94–100) vs 94 (85–100)) and ACLQOL (89 (76–96) vs 70 (64–82)) scores, compared with ACLOAS grades 2–3. More participants with ACLOAS grade 1 had normal 3-month knee laxity (100% vs 40%) and returned to pre-injury sport (92% vs 64%), compared with participants with an ACLOAS grades 2–3. Eleven patients (14%) re-injured their ACL.

**Conclusion** After management of acute ACL rupture with the CBP, 90% of patients had evidence of healing on 3-month MRI (continuity of the ACL). More ACL healing on 3-month MRI was associated with better outcomes. Longer-term follow-up and clinical trials are needed to inform clinical practice.

## BACKGROUND

A common belief among researchers and clinicians is that a ruptured anterior cruciate ligament (ACL) has limited healing capacity. This belief has shaped current management strategies for ACL rupture. However, anatomical studies have demonstrated

## WHAT IS ALREADY KNOWN ON THIS TOPIC?

- ⇒ Poor long-term outcomes after anterior cruciate ligament (ACL) rupture are common following surgical or non-surgical management strategies, which are based on the assumption that a ruptured ACL has limited healing capacity
- ⇒ A recent analysis of the KANON Trial found that at least 30% of participants with ACL rupture randomised to initial rehabilitation and optional surgery had signs of ACL healing (a continuous ACL) on a 2-year MRI.
- ⇒ It is not clear whether a novel bracing protocol designed to facilitate healing of ACL rupture can improve patient outcomes following ACL rupture.

## WHAT ARE THE FINDINGS?

- ⇒ After management with the Cross Bracing Protocol (CBP), 72 out of 80 (90%) participants with complete discontinuity of the ACL at baseline had signs of ACL healing (ACL continuity) on 3-month MRI.
- ⇒ Six out of eight ACLs that did not heal, had attached to the lateral wall±posterior cruciate ligament on a 3-month MRI.
- ⇒ A lower ACL OsteoArthritis Score grade (more healing) on a 3-month MRI was associated with better self-reported knee function and knee-related quality of life, higher return to sport rates and reduced knee laxity.

## HOW MIGHT IT IMPACT ON CLINICAL PRACTICE IN THE FUTURE?

- ⇒ Considering the scarcity of research related to ACL healing and the novelty of the CBP, this study provides initial results to guide further research, including clinical trials.
- ⇒ This study provides further evidence of the healing potential of the ACL, and the association between ACL healing on MRI and favourable patient outcomes.

that the ACL has a rich vascular supply<sup>1 2</sup> and histological studies describe ruptured ACLs passing through the typical phases of healing after injury, despite a slower rate of healing and reduced healing capacity compared with medial collateral ligament rupture.<sup>3–5</sup> An absence of tissue bridging the



© Author(s) (or their employer(s)) 2023. Re-use permitted under CC BY. Published by BMJ.

**To cite:** Filbay SR, Dowsett M, Chaker Jomaa M, et al. *Br J Sports Med* Epub ahead of print: [please include Day Month Year]. doi:10.1136/bjsports-2023-106931

gap between ligament remnants has been observed, which may inhibit healing of ACL rupture.<sup>6</sup> The distance between the ACL origin to its insertion is shortest at 90°–135° of knee flexion.<sup>7</sup> We have developed the novel Cross Bracing Protocol (CBP) that aims to reduce the gap distance between the ligament remnants by immobilising the knee at 90° of flexion for 4 weeks after acute ACL rupture in attempt to facilitate bridging of tissue and healing between the ruptured ACL remnants. After 4 weeks, knee range-of-motion is increased at weekly increments and the CBP is coupled with physiotherapist-supervised rehabilitation targeting lower limb neuromuscular control, muscle strengthening and power, and functional training to enable return-to-sport and recreational activities.

A 2021 systematic review identified only six studies that evaluated ACL healing on MRI after ACL rupture.<sup>8</sup> Studies were of low methodological quality and five studies included ≤50 participants.<sup>8</sup> More recently, an analysis of the KANON Trial observed MRI evidence of ACL healing at a 2-year follow-up in 30% of participants who were randomised to initial rehabilitation and optional delayed ACL reconstruction (ACLR).<sup>9</sup> Those with MRI evidence of ACL healing reported better 2-year knee function and quality of life (QOL), compared with participants with no MRI evidence of ACL healing, and participants managed with early or delayed ACLR.<sup>9</sup> Many ACL injured people experience poor long-term outcomes, including sport and activity limitations, persistent pain, an early onset of osteoarthritis and poor long-term QOL.<sup>10–13</sup> Considering the suboptimal outcomes with current management strategies, and the potential for ACL healing to result in favourable outcomes, new strategies to preserve and heal the native ACL should be explored. The objective of this study was to investigate MRI evidence of ACL healing, patient-reported outcomes and knee laxity in the first 80 individuals with acute ACL rupture managed non-surgically with the CBP.

## METHODS

### Study design

This case series investigates outcomes from 80 consecutive patients with acute ACL rupture who were managed with the CBP. Data were collected in the course of clinical practice, and all participants provided informed consent for their data to be included in this study.

## Participants

Eighty patients between the ages of 10 years and 58 years (mean (SD): 26 years (10 years)), who presented to a private sport and exercise medicine physician in Sydney, Australia (TC), with MRI confirmed acute ACL rupture between March 2016 and September 2021, were managed with the CBP (figure 1). Twelve out of 80 patients were residing outside of Sydney or impacted by COVID-19 restrictions and underwent virtual specialist consultations (TC), supplemented by in-person management and assessment from an experienced sports and exercise physician and physiotherapists trained in the CBP.

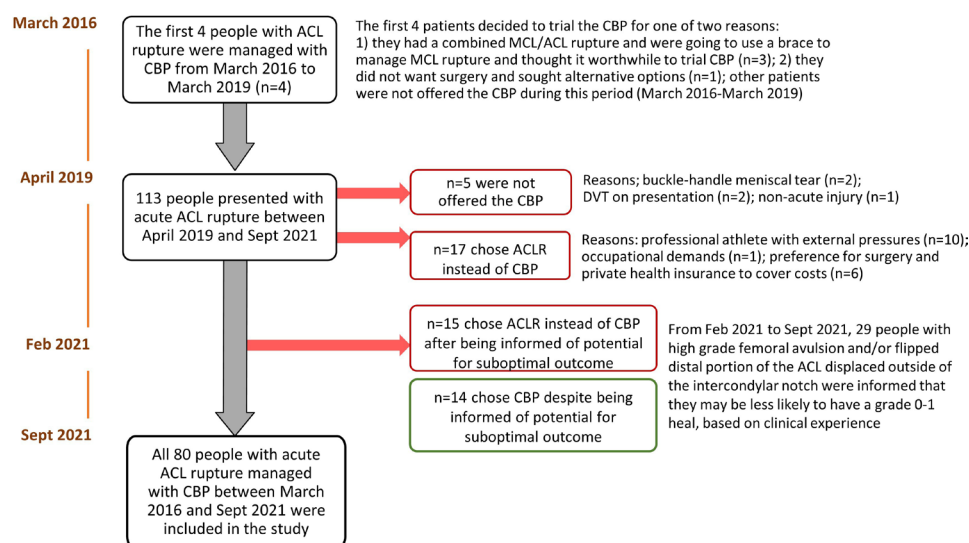
Patients of all ages, were considered eligible for the CBP if they presented within 1 month of acute ACL rupture, confirmed on MRI (ie, an ACL OsteoArthritis Score (ACLOAS) grade 3 representing full discontinuity of the ACL). To be considered for the CBP, patients needed to be functionally independent and capable of managing a period of knee immobilisation. Patients were considered ineligible if they had clinical or MRI evidence of structural concomitant injuries that necessitated surgical intervention (eg, an unstable bucket-handle meniscal tear) or a history of deep vein thrombosis (DVT) or pulmonary embolism. After the 10th participant, DVT screening was added to the eligibility criteria, whereby all patients underwent Doppler ultrasound to exclude DVT. The flow of participants through the study, including reasons for not offering the CBP and reasons for choosing ACLR (no participants chose rehabilitation alone), is presented in figure 1.

## Management decision

Patients were informed about treatment options: early ACLR, non-operative rehabilitation with optional delayed ACLR or trialling the CBP. Patients received information on the rationale and theoretical justification for the CBP, and they were aware that this was an experimental treatment with a chance of failure and possible need for ACLR in the future. The decision to trial the CBP was based on patient preference.

## Cross Bracing Protocol

The CBP and accompanying rehabilitation protocol is described in online supplemental appendix 1. In patients presenting



**Figure 1** Participant flow chart. ACL, anterior cruciate ligament; ACLR, anterior cruciate ligament reconstruction; CBP, Cross Bracing Protocol; DVT, deep vein thrombosis; MCL, medial collateral ligament.

in the first week post-injury, the use of cryotherapy and anti-inflammatory medications was discouraged to minimise impairment of the acute inflammatory response.<sup>5 14</sup> Paracetamol was prescribed as needed for pain. Fourteen patients who presented  $\geq 7$  days post-injury with minimal or no hemarthrosis/effusion underwent a platelet-rich plasma injection.

The injured knee was then secured at 90° flexion in a standard limited range-of-motion brace as early as convenient following injury (range: 0–31 days post-injury, median (IQR): 5 days (4–11 days)), by a physiotherapist trained in the CBP. Patients were advised to keep the knee fixed in the brace at all times for the first 4 weeks, including during sleep and showering. Patients were educated regarding safe use of crutches during the first 8 weeks (and use of additional mobility aids if desired, such as a knee scooter, i-Walker or wheelchair), while unable to sufficiently extend the knee to walk unaided. Patients were given advice regarding self-care, comfort and DVT risk mitigation strategies, including hydration and calf pump exercises. Prophylactic Clexane injections were introduced after the 10th patient. From patient 20 onwards, Rivaroxiban 10 mg was prescribed (for the first 8 weeks of the CBP) instead of Clexane.

After 4 weeks, the range-of-motion brace was adjusted at regular increments to allow progressive increases in range-of-motion (see online supplemental appendix 1). At week 10, unrestricted range-of-motion was allowed, and the brace was removed at 12 weeks. Weight-bearing was encouraged within the available range and patients completed standardised goal-oriented exercise-based rehabilitation while in the brace, and after brace removal until the point of return-to-sport (online supplemental appendix 1). Patients had weekly physiotherapist consults to check/adjust the brace and progress exercise-based rehabilitation (online supplemental appendix 1). Return-to-sport was not recommended until 9–12 months post-injury, and was dependent on patient and clinical factors, including desire

to return-to-sport, completion of required rehabilitation and passing functional return-to-sport criteria.<sup>15</sup>

### Deviations from protocol

The first 4 patients had the brace removed and their first follow-up assessment at 9 weeks. After this, a decision was made to extend the CBP from 9 weeks to 12 weeks to protect the ACL for longer and enable more accurate interpretation of the MRI at the time of brace removal. Additionally, two patients for personal reasons (work demands/to care for young children) removed the brace at the end of week 4 and week 6. Both patients were compliant with the CBP before brace removal and completed rehabilitation post brace removal.

### Outcomes

Details of all outcomes, including measurement method, time of measurement and interpretation, are presented in table 1.

### Patient and public involvement

Patients have been involved in the development and refinement of the CBP, and the authorship team includes a patient who was managed with the CBP (MD).

### Equity, diversity and inclusion

All patients with acute ACL rupture managed with the CBP prior to October 2021 participated in the study, including 31 (39%) females, people aged 10–58 years at the time of injury, and both private (69%) and publicly (31%) funded patients. Although only 3 women are included in the authorship team, the lead researcher is a woman and we include authors from a variety of career stages and clinical disciplines.

**Table 1** Outcome measurement and interpretation

Construct (measure)	Time-point(s)	Assessment method	Interpretation
Evidence of ACL healing on MRI (ACLOAS MRI grading system) <sup>21</sup>	3 months; 6 months	MRI interpretation was performed independently by three experienced musculoskeletal radiologists (RS, PL and AVDH). A consensus meeting resolved any discrepancies	ACLOAS grades: 0=normal ligament with hypointense signal and regular thickness and continuity; 1=thickened ligament and/or high intraligamentous signal with normal course and continuity; 2=thinned or elongated but continuous ligament; 3=absent ligament or complete discontinuity <sup>21</sup>
Self-reported knee function (Lysholm Scale) <sup>22</sup>	Median (IQR): 12 months (7–16 months)	Self-reported questionnaire	Scored out of 100 across 8 domains: pain, instability, locking, swelling, limping, stair climbing, squatting and the need for gait support. <sup>23</sup> A score of 84 is considered 'good'. A score of >94 is considered 'excellent'. A lower score indicates increased severity of symptoms and worse function. <sup>24</sup> Acceptable reliability, validity and responsiveness for use in ACL-injured individuals <sup>25</sup>
Knee-related QOL (ACLQOL) <sup>26</sup>	Median (IQR): 12 months (7–16 months)	Self-reported questionnaire	The 32-item questionnaire contains five domains (Symptoms & Physical Complaints, Work-Related Concerns, Recreation Activities & Sport Participation or Competition, Lifestyle, Social & Emotional Aspects) and is scored out of 100 (overall score and individual domain scores) with a lower score indicating worse knee-related QOL. <sup>26</sup> Valid, reliable and responsive for use in ACL injured patients <sup>17 27</sup>
Passive knee laxity (Lachman's test and pivot-shift test)	3 months (Lachman's test); 6 months (pivot-shift test)	Both tests were performed by one of two experienced sports and exercise medicine physicians (TC and RD) who were not blinded to the treatment	Lachman's test was graded relative to the contralateral knee (no side-to-side difference; end-point with side-to-side difference and no end-point). <sup>28</sup> Pivot shift test was graded based on the quality of the lateral pivot-shift manoeuvre (normal=no glide or jerk detected; glide=a 'gliding' motion (IKDC grade 1 <sup>29</sup> ); jerk=locked subluxation (described as grade 3 instability by the IKDC classification <sup>29</sup> ); or a 'jerking'/clunking movement pattern (IKDC grade 2 instability <sup>29</sup> ))
Return to pre-injury sport	12 months	Self-reported during a clinical visit or via telephone interview	Patients reported whether they had returned to pre-injury sport (information collected included the type and level of sport that they returned to)

ACL, anterior cruciate ligament; ACLOAS, Anterior Cruciate Ligament OsteoArthritis Score; ACLQOL, Anterior Cruciate Ligament Quality Of Life Questionnaire; IKDC, International Knee Documentation Committee; QOL, quality of life.

### Statistical analysis

All continuous variables were assessed for normality and mean (SD) or median (IQR) reported, as appropriate. Participant characteristics and outcomes are presented for all participants, and based on 3-month ACLOAS. Mann-Whitney U tests were used to compare continuous outcomes (Lysholm Scale and ACLQOL scores) and Pearson's  $\chi^2$  tests were used to compare categorical outcomes (Lachman's test, Pivot-shift test and return-to-sport) between groups with lower versus higher ACLOAS grades on 3-month MRI (ACLOAS grades 0–1 vs ACLOAS grades 2–3). Since seven participants completed the Lysholm Scale and ACLQOL score after ACL re-rupture, a subgroup analysis was performed to present data and compare groups after excluding these seven individuals from the analysis (online supplemental appendix 2). For the two participants with missing MRI data at 3-month follow-up (decided not to undergo MRI), the ACLOAS from 6-month MRI was used to classify 3-month ACLOAS for analysis (95% of participants had the same ACLOAS at 3 months and 6 months, only 1 participant had a worse ACLOAS grade due to re-injury). Six people were missing 6-month MRI data (due to ACL re-rupture (n=3), pregnancy (n=1) or decided not to undergo MRI (n=2)). Since only one participant had missing data for the Lysholm Scale and ACLQOL scores, a complete case analysis was performed.

## RESULTS

### Participant characteristics

All individuals managed with the CBP provided consent for their data to be included in this study. Participants were aged a mean (SD) 26 (10) years at injury, 39% were female and 49% had concomitant meniscal injury (38 stable vertical tears in posterior horn of medial and/or lateral meniscus and 1 displaced medial meniscus ramp lesion). Participant characteristics are reported in table 2 for all participants and by ACLOAS grade on 3-month MRI (grade 1 vs grades 2–3). Participant characteristics are presented separately for participants with an ACLOAS grades 2 and 3, in online supplemental appendix 3.

### ACL healing as visualised on MRI

At 3-month follow-up, n=72 (90%) had a continuous ACL (n=40 (50%) ACLOAS grade 1, n=32 (40%) ACLOAS grade 2). Of the 8 patients with ACLOAS grade 3 on 3-month MRI, 6 ACLs had attached to the lateral wall (n=3) or lateral wall and posterior cruciate ligament (n=3). Between 3-month and 6-month MRI, 4 participants changed from ACLOAS grade 1 to grade 0 and 1 participant changed from ACLOAS grade 2 to grade 3 due to subsequent knee injury. ACLOAS grades from 3-month and 6-month MRIs (complete case analysis) are presented in online supplemental appendix 4. Other participants sustained the same ACLOAS grade at 3 months and 6 months. MRI examples of ACL healing for five participants are presented in figure 2.

### Patient-reported outcomes and passive knee laxity

Participants with an ACLOAS grade 1 on 3 month MRI reported better patient-reported outcomes on the Lysholm Scale and ACLQOL (including all ACLQOL subscales) compared with participants with an ACLOAS grades 2–3 (table 3). Online supplemental appendix 2 presents outcomes separately for participants with an ACLOAS grades 2 and 3. Online supplemental appendix 5 depicts participant scores based on time post-injury and 3-month healing status. Participants with an ACLOAS grade 1 had reduced knee laxity and a higher proportion returned to

**Table 2** Participant characteristics

	All participants (n=80)	Evidence of ACL healing on 3 month MRI	
		ACLOAS grade 1 (n=40)	ACLOAS grades 2–3 (n=40)
Age at injury (SD)	26 (10)	27 (10)	26 (10)
Sex (% female)	31 (39)	14 (35)	16 (40)
Time from injury to brace (days)	8 (7)	6 (4)	8 (7)
Used private health insurance	55 (69)	27 (68)	27 (68)
Level of pre-injury sport			
Recreational	28 (35)	13 (33)	15 (38)
Competitive	49 (61)	25 (63)	23 (58)
Professional	4 (5)	2 (5)	2 (5)
Contact mechanism of injury	24 (30)	17 (43)	7 (18)
History of contralateral ACL injury	8 (10)	3 (8)	5 (13)
Adherent to bracing protocol	77 (96)	37 (93)	39 (98)
PRP injection	14 (18)	5 (13)	9 (23)
Concomitant injuries*			
MCL injury	40 (50)	17 (43)	23 (58)
Meniscal injury	39 (49)	21 (53)	18 (45)
PLC injury	31 (39)	20 (50)	11 (28)
Bone contusion	74 (93)	38 (95)	35 (88)
Chondral injury	1 (1)	1 (3)	0 (0)
Subcortical fracture	6 (8)	3 (8)	3 (8)
ACL rupture characteristics*			
ACL femoral origin intact:	36 (45)	33 (83)	3 (8)
Displacement of ACL tissue†	17 (21)	14 (35)	2 (5)
Partial avulsion of femoral origin:	44 (55)	7 (18)	37 (93)
Displacement of ACL tissue†	33 (41)	4 (10)	29 (73)
Complete avulsion of femoral origin	0 (0)	0 (0)	0 (0)

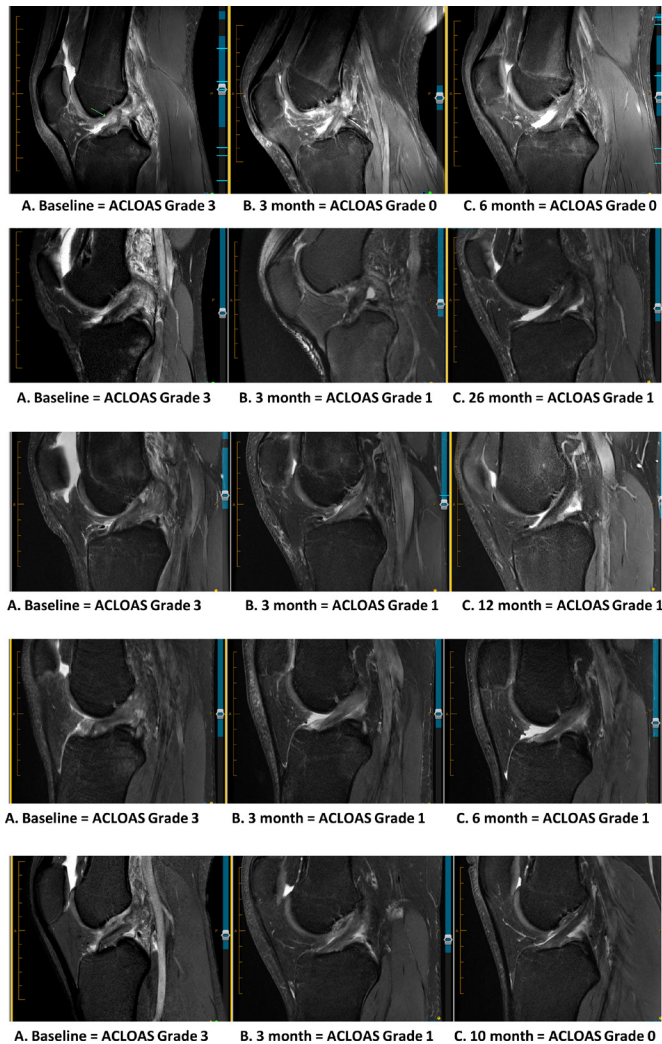
Data are reported as mean (SD) or count (proportion).  
 For the two participants with missing 3-month MRI data, ACLOAS was estimated using ACLOAS from 6-month MRI (70 out of 75 (93%) participants with 6-month MRI data had the same ACLOAS at 3 months and 6 months).  
 \*Concomitant injuries and ACL rupture characteristics were assessed by MRI within 3 weeks of acute ACL rupture.  
 †ACL tissue is displaced outside the boundaries of the intercondylar notch;  
 ACLOAS, Anterior Cruciate Ligament OsteoArthritis Score; MCL, medial collateral ligament; PLC, posterior lateral corner; PRP, platelet rich plasma.

pre-injury sport (92% vs 62%) compared with participants with an ACLOAS grades 2–3 (table 3).

### ACL re-injury and subsequent surgery

Eleven (14%) participants re-injured their ACL (mean (SD): 10 months (4 months), range: 5–18 months), 4 had ACLOAS grade 1, and 7 had ACLOAS grade 2 on 3-month MRI. After re-injury, 9 of 11 participants underwent ACLR (mean: 2 months after re-injury, range: 0–6 months), 1 participant decided to undergo the CBP again (resulting in evidence of ACL healing on MRI, ACLOAS grade 1). Mechanisms of re-injury included AFL/rugby (n=3), basketball (n=1), skiing (n=1), cycling accident (n=1), netball (n=1), Oz-tag (n=1), wrestling (n=1), dancing (n=1) and climbing (n=1). The four participants who re-injured their ACL despite ACLOAS grade 1 on 3-month MRI, did so during high-speed skiing/cycling accidents (5 months and 18 months post-injury), rugby (contact injury 10 months post-injury) and AFL (contact injury 17 months post-injury).

Two of 80 (2.5%) participants underwent an arthroscopic knee surgery, one participant for cyclops lesion removal 7 months post-injury and another underwent a partial lateral



**Figure 2** MRI images demonstrating MRI evidence of ACL healing for five participants. ACL, anterior cruciate ligament; ACLOAS, Anterior Cruciate Ligament OsteoArthritis Score.

meniscectomy 5 months post-injury. Thirty eight of 39 (97%) meniscal tears were asymptomatic following the CBP, including one displaced medial meniscus ramp lesion.

### Adverse events

Two patients were diagnosed with a below knee DVT (before DVT prophylaxis was added to the protocol), which were identified in the second week of the CBP, and were successfully managed with therapeutic dosing of Clexane. Both patients completed the CBP. Follow-up Doppler ultrasound demonstrated complete resolution of the DVT for both patients. Thereafter (11th patient onwards), DVT risk mitigation strategies were deployed as described in the Methods section.

Most patients reported mild and transient discomfort while adapting to the brace during the first week, often citing an awkward or uncomfortable sleeping position with the knee fixed at 90°. This discomfort resolved for all patients without intervention. No patients opted to exit the programme due to discomfort or complication. At the time of unrestricted knee flexion in the brace, a flexion contracture (typically 5°–15°) was observed in 11 patients (14%). This resolved in all patients with physiotherapy exercises within 3 weeks. Contralateral lower limb overuse injuries, including pes anserine bursitis (n=1),

insertional hamstrings tendinopathy (n=1) and patellofemoral pain (n=3), were observed at the time of brace removal.

## DISCUSSION

### Summary

This case series found that 72 out of 80 (90%) people with acute ACL rupture who were managed with a novel bracing protocol involving immobilisation of the knee at 90° flexion, had evidence of ACL healing (a continuous ACL) on 3-month MRI. An ACLOAS grade 1 on 3-month MRI was associated with better 12-month knee function and QOL, reduced passive knee laxity and a higher rate of return-to-sport, compared with an ACLOAS grades 2–3.

### ACL healing

A recent analysis of the KANON trial found that 16 of 54 (30%) participants randomised to initial rehabilitation and optional delayed ACLR had signs of ACL healing on a 2-year MRI.<sup>9</sup> Of the 30 participants who were managed with rehabilitation alone, 53% had MRI evidence of ACL healing at 2 years.<sup>9</sup> In comparison, applying the same criteria we observed ACL healing in 72 of 80 (90%) participants on 3-month MRI. Six of 8 ACLs with discontinuous fibres had attached to the lateral wall±posterior cruciate ligament. Although we graded these as ‘discontinuous’, it is possible that attachment to these structures could provide some function/stability, and it is not clear how this compares to the function/stability of an ACL graft. The high rate of healing observed on 3-month MRI suggests that the CBP could be conducive to ACL healing. To explore this potential, further research, including mechanistic studies, is required. Interestingly, patients had a range of concomitant injuries at baseline which became asymptomatic after the CBP. Only 1 of 39 patients with concomitant meniscal injuries had persistent symptoms after the CBP and underwent meniscal surgery. It is possible that the CBP could be beneficial for healing of concomitant injuries, this warrants further research.

Additionally, 37 of 40 participants (93%) with an ACLOAS grades 2–3 on 3-month MRI had an ACL rupture with a partial femoral avulsion, compared with only 7 (18%) participants with an ACLOAS grade 1. Although outside the scope of this study, it is possible that characteristics of ACL rupture observed on acute MRI (including partial/complete femoral avulsion, the displacement of ACL tissues outside of the intercondylar notch and gap distance between the ruptured ACL stumps) are associated with the likelihood of ACL healing. Further studies are needed to explore this possibility, with potential to inform ACL injury management decisions.

### Interpretation of outcomes

The favourable outcomes observed in patients with signs of ACL healing in our study are supported by findings from the KANON trial. In the KANON trial, participants with an ACLOAS of 0–2 on a 2-year MRI reported better knee function and QOL compared with participants with ACL discontinuity, and people who had delayed or early ACLR.<sup>9</sup> Notably, only 8 (10%) patients in our study had ACL discontinuity on a 3-month MRI, and we used a different cut-off when comparing outcomes between groups. Collectively, results from the KANON trial and CBP suggest there may be a spectrum of ACL healing, whereby a more ‘normal’ MRI appearance of the ACL may be associated with favourable patient outcomes.

Surprisingly, patients with an ACLOAS grades 2–3 reported excellent Lysholm Scale scores on average, even though scores

Table 3 Participant outcomes

	All participants (n=80)	Evidence of ACL healing on 3-month MRI		P value*
		ACLOAS grade 1 (n=40)	ACLOAS grades 2–3 (n=40)	
Lysholm Scale score	95 (89 to 100)	98 (94 to 100)	94 (85 to 94)	0.01
ACLQOL score (total)	80 (69 to 93)	89 (76 to 96)	70 (64 to 82)	<0.001
Symptoms/physical complaints	94 (86 to 98)	96 (92 to 100)	86 (82 to 96)	<0.001
Work-related concerns	98 (90 to 100)	100 (98 to 100)	95 (79 to 100)	0.004
Rec and sport participation	68 (54 to 91)	82 (65 to 93)	58 (42 to 78)	0.001
Lifestyle	88 (74 to 98)	94 (86 to 100)	78 (63 to 93)	<0.001
Social and emotional	78 (58 to 94)	90 (72 to 94)	68 (52 to 80)	0.003
3-month Lachman's test				
No SSD	64 (80)	40 (100)	24 (60)	<0.001
End point with SSD	15 (19)	0 (0)	15 (38)	
No endpoint	1 (1)	0 (0)	1 (3)	
6-month pivot-shift test				
Normal	44 (58)	33 (85)	11 (30)	<0.001
Glide	31 (41)	6 (15)	25 (68)	
Jerk	1 (1)	0 (0)	1 (3)	
Missing, n	4	1	3	
Return to pre-injury sport at 12 months				
Yes	59 (79)	36 (92)	23 (62)	<0.001
No	16 (21)	3 (8)	13 (35)	
N/A (early cross-over to ACLR)	5	1	4	
Underwent arthroscopic surgery	2 (3)	1 (3)	1 (3)	1.0
ACL re-rupture	11 (14)	4 (10)	7 (18)	0.17

For n=2 who did not have an MRI at 3 months, 6 month MRI results are reported (93% of participants had the same ACLOAS at 3 months and 6 months).  
Missing data from n=1 for the Lysholm Scale and ACLQOL (ACLOAS grade 2).  
Non-normally distributed data are presented as median (IQR).  
\*Mann-Whitney U Test (continuous variables) or Pearson's  $\chi^2$  test (categorical variables) compared outcomes between groups (ACLOAS grade 1 vs ACLOAS grades 2–3), the p value represents the probability of obtaining the observed results assuming that the null hypothesis is true.  
ACLOAS, Anterior Cruciate Ligament OsteoArthritis Score; ACLR, anterior cruciate ligament reconstruction; N/A, not applicable; RTS, return-to-sport; SSD, side to side difference.

were lower than patients with an ACLOAS grade 1. A Lysholm median score of 98 reported by people with an ACLOAS grade 1 is better than mean scores reported 24–71 months after ACLR using autograft (mean scores range from 85 to 95).<sup>16</sup> In contrast, the difference in ACLQOL scores was large between people with lower and higher grades of ACL healing. People with an ACLOAS grade 1 reported a median (IQR) ACLQOL score of 89 (76–96). In comparison, people managed with ACLR or rehabilitation alone, report mean ACLQOL scores in the range of 50–76, across a variety of time-points after ACL injury.<sup>17</sup> The ACLQOL scores reported by people with an ACLOAS grades 2–3 may be more comparable with ACLQOL scores reported after ACLR and management with rehabilitation alone.<sup>17</sup> Examining the ACLQOL domain scores suggests the greatest differences were within the recreational and sport participation, lifestyle and social emotional domains, with smaller differences observed in the symptoms and physical complaints and work-related concern domains.

The lower proportion who returned to sport with an ACLOAS grades 2–3 (64%) compared with an ACLOAS grade 1 (92%) could partly explain the lower QOL in this group considering return-to-sport is a key determinant of QOL after ACL injury.<sup>18</sup> These return-to-sport rates are high compared with studies in ACL reconstructed individuals, where a pooled average of 55% of non-professional athletes returned to sport after ACLR.<sup>10</sup> It should also be noted that patients in our study were aware of the degree of healing observed on MRI. It is possible that patients who received feedback that they had a suboptimal healing result

on MRI had lower knee confidence and negative mental impacts compared with patients who received more positive feedback. This could also contribute to lower QOL scores in these domains.

### Subsequent injury

It is not known whether a continuous ACL observed on MRI reflects restoration of pre-injury ACL function. Although, the high self-reported knee function and return-to-sport rate in people with an ACLOAS grade 1 suggests a positive association with knee function. It is important to note that 11 patients (14%) had re-ruptured their ACL at the time of follow-up. The 4 patients who re-injured their ACL despite an ACLOAS grade 1 on a 3-month MRI did so during competitive sport (rugby/AFL contact injuries) or high-speed skiing/cycling accidents. It is not clear whether re-injury of the ACL is a reflection of reduced tensile strength of the ACL fibres, considering the mechanisms of re-injury were similar to the mechanisms of initial ACL rupture. The rate of re-injury observed in our study may be comparable with re-injury rates following ACLR, whereby approximately 1-in-5 young athletes suffer a rupture of the ACL graft or contralateral ACL, and around 90% of these injuries occur after return to high-risk sports.<sup>19</sup> Interestingly, one patient elected to undergo the CBP after re-rupturing their ACL and achieved an ACLOAS grade 1 on a 3-month MRI and returned to sport (rugby), after re-completion of the CBP. Longer-term follow-up is required to gain greater understanding of survivorship of the healed ACL

and the risk of subsequent knee injury following management with the CBP.

### Implications of findings

In view of the promising outcomes of this case series and the potential advantages of preserving the native ACL following injury, further research in this area is warranted. Prognostic studies are needed to determine whether certain presentations are less likely to heal when managed with the CBP. In the future, the potential for the ACL to heal may be an important consideration when deciding on surgical or non-surgical management. We found that signs of ACL healing were apparent on MRI as early as 3 months after ACL rupture. Three months is the typical duration that people trial initial rehabilitation before considering delayed ACLR. It is possible that 3-month MRI findings could identify patients who would benefit from ACLR. Only 10% of patients with an ACLOAS grade 1 at 3 months had progressed to an ACLOAS grade 0 at 6 months. Further research is needed to understand the timeline and stages of ACL healing. Additionally, clinical trials are needed to compare outcomes for patients managed with the CBP, compared with those who are managed with ACLR or rehabilitation alone. Of particular importance will be the investigation of re-injury rates, return-to-sport, patient-reported outcomes, functional stability and the prevalence of knee osteoarthritis.

Bridge enhanced ACL repair (BEAR) is a surgical technique that augments repair of the ligament with a scaffold implant (a resorbable protein-based implant containing autologous blood) positioned between the torn ends of a midsubstance ACL tear in attempt to facilitate healing.<sup>20</sup> An interesting area for future research is the comparison of ACL healing on MRI and clinical outcomes following management with BEAR compared with the CBP. Additionally, there may be specific ACL rupture presentations that benefit from early surgical intervention to assist with facilitating ACL healing. For example, acute ACL injuries with a large gap distance between torn remnants and acute ACL injuries with displaced ACL tissue outside the intercondylar notch might benefit from surgery to reduce and realign the ACL tissues. There could also be a role for bracing in knee flexion postoperatively to protect the repair and/or reduction of the injured ACL tissues (akin to management of displaced bone fractures with open reduction internal fixation followed by a period of postoperative immobilisation). Further research is needed to explore this potential.

### Limitations

This was a pragmatic study, whereby data were collected in the course of clinical practice rather than in a research setting. For this reason, some adaptations were made to the CBP overtime. Our study design did not allow comparison of outcomes with people managed with ACLR or rehabilitation alone. There is also potential for selection bias. After the 50th patient was braced, patients were discouraged from undertaking the CBP if they had a femoral avulsion and/or ACL tissue displaced outside the boundaries of the intercondylar notch. Although 14 of 29 patients underwent the CBP despite this advice, 15 of these individuals chose ACLR. The overall proportion with an ACLOAS grade 1 at 3 months may have been lower if these 15 individuals had not received this advice and underwent the CBP. Tests of passive knee laxity were performed by two unblinded physicians and may be subject to detection and observer bias, a clinical trial, including blinding of examiners, is needed. Further studies may also benefit from using a knee arthrometer to collect

more objective measures of knee laxity. MRIs were graded by three radiologists who were aware that patients had undertaken the CBP. Although this case series highlights the potential for positive outcomes using the CBP, larger cohorts with longer-term follow-up and, in particular, randomised clinical trials are needed.

### CONCLUSION

After management of acute ACL rupture with a novel bracing protocol, 90% of patients had evidence of ACL healing on a 3-month MRI (continuity of the ACL). More ACL healing on a 3-month MRI was associated with better knee function and QOL, less passive knee laxity and a higher return-to-sport rate.

### Author affiliations

<sup>1</sup>Department of Physiotherapy, The University of Melbourne, Melbourne, Victoria, Australia

<sup>2</sup>School of Medicine, Sydney Campus, The University of Notre Dame Australia, Darlinghurst, New South Wales, Australia

<sup>3</sup>School of Public Health, University of Sydney Medical School, Sydney, New South Wales, Australia

<sup>4</sup>Lifecare Prahlan Sports Medicine Centre, Melbourne, Victoria, Australia

<sup>5</sup>PRP Diagnostic Imaging, Sydney, New South Wales, Australia

<sup>6</sup>Stadium Sports Physiotherapy, Sydney, New South Wales, Australia

<sup>7</sup>Northern Beaches Hospital, Sydney, New South Wales, Australia

<sup>8</sup>New South Wales Institute of Sports, Sydney, New South Wales, Australia

<sup>9</sup>Sportsmed Manawatu, Palmerston North, New Zealand

<sup>10</sup>The University of Sydney School of Biomedical Engineering, Darlington, New South Wales, Australia

<sup>11</sup>Vestech Medical Pty Ltd, Sydney, New South Wales, Australia

<sup>12</sup>The Stadium Sports Medicine Clinic, Sydney, New South Wales, Australia

**Twitter** Stephanie R Filbay @stephilbay

**Contributors** SRF applied for ethics approval, designed the study, ran the analysis, drafted and revised the manuscript, created all figures and tables, and is the study guarantor. MC conceived the Cross Bracing Protocol (CBP). TC led the development/refinement of the CBP and management of patients, collected all data, contributed to interpretation of findings and manuscript revision. RS, PL and AVDH graded all MRIs. MD, MCJ and MA assisted with data collection. MCJ, JR, JK, JM, MM, DEKK, RD and GR managed patients in clinical practice and contributed to the refinement of the CBP and rehabilitation protocol. All authors provided input and approved the final version of the manuscript.

**Funding** This study was funded through an NHMRC Investigator Grant awarded to SRF (1194428).

**Competing interests** SRF served on the Osteoarthritis Research Society International (OARSI) Board of Directors in 2022-2023, and received funding (for travel and accommodation) to attend two board meetings. MA received reimbursement to attend and speak at Smith and Nephew symposium at The Combined TOSSM & APKASS conference in Thailand, October 2022. TC has formed a non-financial relationship with Bauerfeind, Germany, and Bauerfeind, Australia, to select a knee brace that optimises patient comfort and compliance. This relationship has had no impact on the completion of this study. After the completion of this study, Bauerfeind, Germany, donated 100 braces to TC for use in clinical practice. Donated braces were not used with participants in this study.

**Patient and public involvement** Patients and/or the public were involved in the design, or conduct, or reporting, or dissemination plans of this research. Refer to the Methods section for further details.

**Patient consent for publication** Not applicable.

**Ethics approval** This study involves human participants. This research project has been approved by Human Research Ethics Committee of The University of Melbourne (#22080). Participants gave informed consent to participate in the study before taking part.

**Provenance and peer review** Not commissioned; externally peer reviewed.

**Data availability statement** Data are available upon reasonable request.

**Supplemental material** This content has been supplied by the author(s). It has not been vetted by BMJ Publishing Group Limited (BMJ) and may not have been peer-reviewed. Any opinions or recommendations discussed are solely those of the author(s) and are not endorsed by BMJ. BMJ disclaims all liability and responsibility arising from any reliance placed on the content. Where the content includes any translated material, BMJ does not warrant the accuracy and reliability

of the translations (including but not limited to local regulations, clinical guidelines, terminology, drug names and drug dosages), and is not responsible for any error and/or omissions arising from translation and adaptation or otherwise.

**Open access** This is an open access article distributed in accordance with the Creative Commons Attribution 4.0 Unported (CC BY 4.0) license, which permits others to copy, redistribute, remix, transform and build upon this work for any purpose, provided the original work is properly cited, a link to the licence is given, and indication of whether changes were made. See: <https://creativecommons.org/licenses/by/4.0/>.

#### ORCID iDs

Stephanie R Filbay <http://orcid.org/0000-0002-9624-0791>

Mohammad Chaker Jomaa <http://orcid.org/0000-0001-7916-2755>

#### REFERENCES

- Scapinelli R. Vascular anatomy of the human cruciate ligaments and surrounding structures. *Clin Anat* 1997;10:151–62.
- Toy BJ, Yeasting RA, Morse DE, et al. Arterial supply to the human anterior cruciate ligament. *J Athl Train* 1995;30:149–52.
- Yoshida M, Fujii K. Differences in cellular properties and responses to growth factors between human ACL and MCL cells. *J Orthop Sci* 1999;4:293–8.
- Nguyen DT, Ramwadhoebe TH, van der Hart CP, et al. Intrinsic healing response of the human anterior cruciate ligament: an histological study of reattached ACL remnants. *J Orthop Res* 2014;32:296–301.
- Witkowski J, Yang L, Wood DJ, et al. Migration and healing of ligament cells under inflammatory conditions. *J Orthop Res* 1997;15:269–77.
- Murray MM, Martin SD, Martin TL, et al. Histological changes in the human anterior cruciate ligament after rupture. *J Bone Joint Surg Am* 2000;82:1387–97.
- Jordan SS, DeFrate LE, Nha KW, et al. The in vivo kinematics of the anteromedial and posterolateral bundles of the anterior cruciate ligament during weightbearing knee flexion. *Am J Sports Med* 2007;35:547–54.
- Pitsillides A, Stasinopoulos D, Giannakou K. Healing potential of the anterior cruciate ligament in terms of fiber continuity after a complete rupture: a systematic review. *J Bodyw Mov Ther* 2021;28:246–54.
- Filbay SR, Roemer FW, Lohmander LS, et al. Evidence of ACL healing on MRI following ACL rupture treated with rehabilitation alone may be associated with better patient-reported outcomes: a secondary analysis from the KANON trial. *Br J Sports Med* 2023;57:91–9.
- Ardern CL, Taylor NF, Feller JA, et al. Fifty-five per cent return to competitive sport following anterior cruciate ligament reconstruction surgery: an updated systematic review and meta-analysis including aspects of physical functioning and contextual factors. *Br J Sports Med* 2014;48:1543–52.
- Lie MM, Risberg MA, Storheim K, et al. What's the rate of knee osteoarthritis 10 years after anterior cruciate ligament injury? An updated systematic review. *Br J Sports Med* 2019;53:1162–7.
- Filbay SR, Ackerman IN, Russell TG, et al. Health-related quality of life after anterior cruciate ligament reconstruction: a systematic review. *Am J Sports Med* 2014;42:1247–55.
- Filbay SR, Culvenor AG, Ackerman IN, et al. Quality of life in anterior cruciate ligament-deficient individuals: a systematic review and meta-analysis. *Br J Sports Med* 2015;49:1033–41.
- Hubbard TJ, Denegar CR. Does cryotherapy improve outcomes with soft tissue injury? *J Athl Train* 2004;39:278–9.
- Filbay SR, Grindem H. Evidence-based recommendations for the management of anterior cruciate ligament (ACL) rupture. *Best Practice & Research Clinical Rheumatology* 2019;33:33–47.
- Carey JL, Dunn WR, Dahm DL, et al. A systematic review of anterior cruciate ligament reconstruction with autograft compared with allograft. *J Bone Joint Surg Am* 2009;91:2242–50.
- Filbay SR, Grevnerts HT, Sonesson S, et al. The Swedish version of the anterior cruciate ligament quality of life measure (ACL-QOL): translation and measurement properties. *Qual Life Res* 2023;32:593–604.
- Filbay SR, Ackerman IN, Russell TG, et al. Return to sport matters—longer-term quality of life after ACL reconstruction in people with knee difficulties. *Scand J Med Sci Sports* 2017;27:514–24.
- Barber-Westin S, Noyes FR. One in 5 athletes sustain reinjury upon return to high-risk sports after ACL reconstruction: a systematic review in 1239 athletes younger than 20 years. *Sports Health* 2020;12:587–97.
- Murray MM, Fleming BC, Badger GJ, et al. Bridge-enhanced anterior cruciate ligament repair is not inferior to autograft anterior cruciate ligament reconstruction at 2 years: results of a prospective randomized clinical trial. *Am J Sports Med* 2020;48:1305–15.
- Roemer FW, Frobell R, Lohmander LS, et al. Anterior cruciate ligament osteoarthritis score (ACLOAS): longitudinal MRI-based whole joint assessment of anterior cruciate ligament injury. *Osteoarthritis and Cartilage* 2014;22:668–82.
- Tegner Y, Lysholm J. Rating systems in the evaluation of knee ligament injuries. *Clin Orthop Relat Res* 1985;198:543–9.
- Lysholm J, Gillquist J. Evaluation of knee ligament surgery results with special emphasis on use of a scoring scale. *Am J Sports Med* 1982;10:150–4.
- Collins NJ, Misra D, Felson DT, et al. Measures of knee function: International Knee Documentation Committee (IKDC) subjective knee evaluation form, Knee Injury and Osteoarthritis Outcome Score (KOOS), Knee Injury and Osteoarthritis Outcome Score Physical Function Short Form (KOOS-PS), Knee Outcome Survey Activities of Daily Living Scale (KOS-ADL), Lysholm knee scoring scale, Oxford Knee Score (OKS), Western Ontario and McMaster Universities Osteoarthritis Index (WOMAC), Activity Rating Scale (ARS), and Tegner Activity Score (TAS). *Arthritis Care Res (Hoboken)* 2011;63 Suppl 11:S208–28.
- Briggs KK, Lysholm J, Tegner Y, et al. The reliability, validity, and responsiveness of the Lysholm score and tegner activity scale for anterior cruciate ligament injuries of the knee: 25 years later. *Am J Sports Med* 2009;37:890–7.
- Mohtadi N. Development and validation of the quality of life outcome measure (questionnaire) for chronic anterior Cruciate ligament deficiency. *Am J Sports Med* 1998;26:350–9.
- Lafave MR, Hiemstra L, Kerslake S, et al. Validity, reliability, and responsiveness of the anterior cruciate ligament quality of life measure: a continuation of its overall validation. *Clin J Sport Med* 2017;27:57–63.
- Cooperman JM, Riddle DL, Rothstein JM. Reliability and validity of judgments of the integrity of the anterior cruciate ligament of the knee using the Lachman's test. *Phys Ther* 1990;70:225–33.
- Galway HR, MacIntosh DL. The lateral pivot shift: a symptom and sign of anterior cruciate ligament insufficiency. *Clin Orthop Relat Res* 1980;1980:45–50.



Filbay SR, et al. Br J Sports Med 2023;0:1–8. doi:10.1136/bjsports-2023-106931

**Appendix 1. The Cross Bracing Protocol**

Week	Brace	Aims	Physiotherapy-supervised rehabilitation
1-4	ROM brace fitted and locked at 90 degrees  NWB with crutches or mobility scooter	<ul style="list-style-type: none"> <li>Maintain knee flexion at 90° in brace 24/7</li> <li>Minimise local and global muscle atrophy</li> <li>Control swelling and pain</li> <li>DVT risk mitigation: Hydration, calf pump exercises and anticoagulation (Rivaroxaban 10mg daily)</li> <li>Counsel re anticipated initial discomfort</li> <li>No NSAIDs medications; no aspiration/drainage of hemarthrosis</li> </ul>	<ul style="list-style-type: none"> <li>Manual therapy weekly, maintaining 90° knee flexion</li> <li>Cryotherapy</li> </ul> <p>Rehabilitation exercises:</p> <ul style="list-style-type: none"> <li>Quadriceps and hamstring co-contractions.</li> <li>Calf Theraband plantarflexion</li> <li>Hip abduction and extension</li> <li>Contralateral limb: single leg press, leg extension, hamstring curls, calf raise, glute bridge, core activation.</li> <li>Upper body strengthening.</li> <li>Ski Ergometer</li> <li>Grinder</li> </ul>

Filbay SR, et al. Br J Sports Med 2023;0:1–8. doi:10.1136/bjsports-2023-106931

5-6	<p>Week 5 = 60 degrees to 90 degrees</p> <p>Week 6 = 45 degrees to 90 degrees</p> <p>NWB with crutches</p>	<ul style="list-style-type: none"> <li>Minimise local and global muscle atrophy</li> <li>Maintain specified knee ROM</li> <li>DVT risk mitigation: Hydration, calf pump exercises and anticoagulation (Rivaroxaban 10mg daily).</li> </ul>	<ul style="list-style-type: none"> <li>Manual therapy and exercises weekly in specified range (brace can come off for physiotherapy).</li> </ul> <p>Rehabilitation exercises:</p> <ul style="list-style-type: none"> <li>Quadriceps and hamstring co-contractions at varying angles</li> <li>Continue calf Theraband plantarflexion</li> <li>Hip abduction and extension with ankle weights or Theraband</li> <li>Continue Contralateral limb; single leg press, leg extension, hamstring curls, calf raise, glute bridge, core activation</li> <li>Upper body strengthening.</li> <li>Ski Ergometer</li> <li>Grinder</li> </ul>
7-8	<p>Week 7 = 30 degrees to FULL FLEXION°</p> <p>Week 8 = 20 degrees to FULL FLEXION</p> <p>PWB with crutches</p>	<ul style="list-style-type: none"> <li>Minimise local and global muscle atrophy</li> <li>Maintain specified knee ROM</li> <li>DVT risk mitigation: Hydration, calf pump exercises and anticoagulation (Rivaroxaban 10mg daily).</li> </ul>	<ul style="list-style-type: none"> <li>Manual therapy and exercises weekly in specified range;</li> <li>Gait retraining.</li> </ul> <p>Rehabilitation exercises, as per week 5-6 plus;</p> <ul style="list-style-type: none"> <li>Wall squats/holds (Week 7=45°, Week 8=30°).</li> <li>Body weight squats within brace limits</li> </ul>
9	<p>Week 9 = 10 degrees to FULL FLEXION.</p>	<ul style="list-style-type: none"> <li>Increase knee ROM</li> <li>Overcome anticipated fixed flexion contracture</li> </ul>	<ul style="list-style-type: none"> <li>Manual therapy and exercises weekly in specified range.</li> <li>Gait retraining.</li> </ul> <p>Rehabilitation exercises:</p>

Filbay SR, et al. Br J Sports Med 2023;0:1–8. doi:10.1136/bjsports-2023-106931

	<p>Week 10 = UNRESTRICTED ROM brace (0-120°+)</p> <p>Wean off crutches. Full weight bearing</p>	<ul style="list-style-type: none"> <li>• Increase muscle strength of lower limbs</li> <li>• Improve proprioception</li> <li>• Cease Rivaroxaban anti-coagulation</li> </ul>	<ul style="list-style-type: none"> <li>• Knee range of motion exercises (heel slides).</li> <li>• Pilates reformer/ leg press</li> <li>• Body weight squats</li> <li>• Bridges - hamstring and gluteal</li> <li>• Crab walks/ monster walks</li> <li>• Calf raises</li> <li>• Static balance exercises</li> <li>• Exercise bike if able to achieve over 100° flexion.</li> <li>• Upper body strengthening.</li> <li>• Grinder</li> </ul>
10-12	<p>Unrestricted ROM brace</p> <p>Full weight bearing</p> <p>End of week 12: Medical consultation and 12-week MRI.</p>	<ul style="list-style-type: none"> <li>• Increase knee ROM</li> <li>• Increase muscle strength</li> <li>• Improve proprioception</li> </ul>	<ul style="list-style-type: none"> <li>• Weekly manual therapy and exercises.</li> <li>• Gait retraining.</li> </ul> <p>Rehabilitation exercises, as per week 9 plus;</p> <ul style="list-style-type: none"> <li>• Leg press (single leg)</li> <li>• Hamstring curl machine</li> <li>• Standing and seated calf raise machine</li> <li>• Static balance exercises.</li> <li>• Exercise bike</li> </ul>
13-14	<p>Week 13 = Removal of brace. Formal clinical review and repeat MRI.</p>	<ul style="list-style-type: none"> <li>• Increase muscle strength</li> <li>• Improve proprioception</li> </ul>	<ul style="list-style-type: none"> <li>• Weekly manual therapy and exercises.</li> <li>• Gait retraining.</li> </ul> <p>Rehabilitation exercises:</p> <ul style="list-style-type: none"> <li>• Continue/progress hamstring and quadriceps strengthening</li> <li>• Addition of single leg squatting/Bulgarian squats</li> <li>• Lunges (half range)</li> <li>• Dynamic balance exercises</li> </ul>

Filbay SR, et al. Br J Sports Med 2023;0:1–8. doi:10.1136/bjsports-2023-106931

	<p>Full weight bearing</p> <p>Brace is worn in high risk environments from week 13-16</p>		<ul style="list-style-type: none"> <li>• Jogging on spot/mini tramp</li> <li>• Light Skipping</li> <li>• Exercise bike</li> <li>• Upper body</li> <li>• Grinder</li> </ul>
15-16	No brace, full weight bearing.	<ul style="list-style-type: none"> <li>• Increase muscle strength</li> <li>• Improve proprioception</li> <li>• Introduce Running (must meet return to running criteria)</li> </ul>	<ul style="list-style-type: none"> <li>• Manual therapy</li> <li>• Running analysis</li> </ul> <p>Criteria for commencing slow running:</p> <ul style="list-style-type: none"> <li>• No effusion</li> <li>• Full ROM</li> <li>• Quadriceps and hamstring strength &gt;80% LSI</li> <li>• Star excursion balance test &gt;90% LSI</li> </ul> <p>Rehabilitation exercises:</p> <p>Continue/progress previous strength and dynamic balance exercises.</p> <ul style="list-style-type: none"> <li>• Addition of walking lateral movements e.g. crab walking, side stepping, grapevines etc.</li> <li>• Addition of jumping/landing</li> <li>• Exercise bike</li> <li>• Swimming</li> <li>• Cross trainer/elliptical</li> <li>• Grinder</li> </ul>

Filbay SR, et al. Br J Sports Med 2023;0:1–8. doi:10.1136/bjsports-2023-106931

			<ul style="list-style-type: none"> <li>• Straight line running only (if meeting above criteria)</li> </ul>
17	No brace, full weight bearing.	<ul style="list-style-type: none"> <li>• Increase muscle strength</li> <li>• Improve proprioception</li> <li>• Introduce faster running</li> </ul>	<ul style="list-style-type: none"> <li>• Manual therapy as required</li> </ul> <p>Criteria for progression to faster running:</p> <ul style="list-style-type: none"> <li>• Completion of slower running with no pain or effusion</li> </ul> <p>Rehabilitation exercises:</p> <ul style="list-style-type: none"> <li>• Continue/progress previous exercises</li> <li>• Introduce faster running (if meeting above criteria)</li> </ul>
18	No brace, full weight bearing.	<ul style="list-style-type: none"> <li>• Increase muscle strength/ proprioception</li> <li>• Introduce Agility exercises</li> </ul>	<ul style="list-style-type: none"> <li>• Manual therapy as required</li> </ul> <p>Criteria for commencing agility exercises:</p> <ul style="list-style-type: none"> <li>• Adequate control with jumping and landing, double and single leg</li> <li>• Completion of faster straight line running with no pain or effusion.</li> </ul> <p>Rehabilitation exercises:</p> <ul style="list-style-type: none"> <li>• Continue/progress previous exercises</li> <li>• Introduce agility exercises (if meeting above criteria)</li> </ul>
19	No brace, full weight bearing.	<ul style="list-style-type: none"> <li>• Increase muscle strength/ proprioception</li> <li>• Introduce hopping</li> </ul>	<ul style="list-style-type: none"> <li>• Manual therapy as required</li> </ul> <p>Rehabilitation exercises:</p> <ul style="list-style-type: none"> <li>• Continue/progress previous exercises</li> <li>• Introduce hopping exercises</li> </ul>
20	No brace, full weight bearing.	<ul style="list-style-type: none"> <li>• Increase and maintain muscle strength/ proprioception</li> </ul>	<ul style="list-style-type: none"> <li>• Manual therapy as required</li> </ul>

Filbay SR, et al. Br J Sports Med 2023;0:1–8. doi:10.1136/bjsports-2023-106931

		<ul style="list-style-type: none"> <li>Consider return to training from week 20 onwards</li> </ul>	<p>Criteria for return to training</p> <ul style="list-style-type: none"> <li>Single leg hop &gt;90% LSI</li> <li>Knee extension strength &gt;90% LSI</li> <li>Hamstring strength &gt;90% LSI</li> <li>Good dynamic knee control on single leg land from step</li> <li>Star excursion balance test &gt;90% LSI</li> </ul> <p>Rehabilitation exercises:</p> <ul style="list-style-type: none"> <li>Continue/progress previous exercises</li> <li>Return to training (if meeting above criteria)</li> </ul>
26+	No brace, full weight bearing.	<ul style="list-style-type: none"> <li>Increase and maintain muscle strength/ proprioception</li> <li>Consider return to sport around 9-12 months (the decision to return to sport is goal and criteria based)</li> </ul>	<ul style="list-style-type: none"> <li>Manual therapy as required</li> </ul> <p>Criteria for return to play</p> <ul style="list-style-type: none"> <li>Triple Hop/lateral hop/ single hop &gt;90% LSI</li> <li>Single leg press 1.8x BW</li> <li>Star excursion balance test &gt;90% LSI</li> </ul> <p>Rehabilitation exercises:</p> <ul style="list-style-type: none"> <li>Continue/progress previous exercises</li> </ul> <p>Return to play (if meeting above criteria)</p>

ROM: Range of movement, NSAIDs: Non steroidal anti inflammatory drugs, N/PWB: Non/ Partial weight bearing, DVT: Deep vein thrombosis, LSI: Limb symmetry index; BW: Body weight.

## Appendix 2. Participant outcomes stratified by healing status, excluding n=7 participants who re-ruptured their ACL prior to completing outcomes

	All participants (n=73)	Evidence of ACL healing on 3 month MRI		
		ACLOAS Grade 1 (n=39)	ACLOAS Grade 2 (n=23)	ACLOAS Grade 3 (n=8)
Lysholm Scale score	95 (90 to 100)	99 (94 to 100)	95 (85 to 100)	95 (87 to 100)
ACL-QOL score (Total)	82 (70 to 94)	89 (78 to 96)	71 (61 to 82)	76 (66 to 95)
Symptoms / Physical Complaints	94 (86 to 98)	96 (92 to 100)	88 (82 to 96)	88 (75 to 96)
Work related concerns	100 (93 to 100)	100 (98 to 100)	93 (78 to 98)	100 (98 to 100)
Rec and sport participation	76 (58 to 93)	82 (66 to 93)	61 (42 to 80)	65 (44 to 90)
Lifestyle	90 (77 to 98)	95 (88 to 100)	78 (60 to 93)	88 (73 to 98)
Social and emotional	81 (60 to 94)	90 (76 to 94)	72 (52 to 84)	73 (63 to 97)

For n=2 who did not have an MRI at 3 months, 6 month MRI results are reported (93% of participants had the same ACLOAS score at 3 and 6 months)

### Appendix 3. Participant characteristics and outcomes reported separately for people with an ACLOAS Grade 2 and 3, on 3 month MRI

**Table 1: Participant characteristics**

	All participants (n=80)	Evidence of ACL healing on 3-month MRI		
		ACLOAS Grade 1 (n=40)	ACLOAS Grade 2 (n=32)	ACLOAS Grade 3 (n=8)
Age at injury	26 SD 10	27 SD 10	23 SD 9	28 SD 16
Sex (% female)	31 (38)	14 (35)	13 (41)	3 (38)
Time from injury to brace (days)	8 SD 7	6 SD 4	11 SD 8	21 SD 49
Used private health insurance	55 (68)	27 (68)	23 (72)	4 (50)
<b>Level of pre-injury sport</b>				
Recreational	28 (35)	13 (33)	11 (34)	4 (50)
Competitive	49 (61)	25 (63)	20 (63)	3 (38)
Professional	4 (5)	2 (5)	1 (3)	1 (13)
Contact mechanism of injury	24 (30)	17 (43)	5 (16)	2 (22)
History of contralateral ACL injury	8 (10)	3 (8)	4 (13)	1 (13)
Adherent to bracing protocol	77 (95)	37 (93)	31 (97)	8 (100)
PRP injection	14 (17)	5 (13)	8 (25)	1 (13)
<b>Concomitant injuries</b>				
MCL injury	40 (49)	17 (43)	17 (53)	6 (75)
Meniscal injury	39 (48)	21 (53)	12 (38)	6 (75)
PLC injury	31 (38)	20 (50)	5 (16)	6 (75)
Bone contusion	74 (91)	38 (95)	27 (84)	8 (100)
Chondral injury	1 (1)	1 (3)	0 (0)	0 (0)
Sub-cortical fracture	6 (7)	3 (8)	3 (9)	0 (0)
<b>ACL rupture characteristics</b>				
<b>ACL femoral origin intact:</b>				
Lateral displacement of distal remnant	8 (10)	8 (20)	0 (0)	0 (0)
Anterior displacement of distal remnant	9 (11)	6 (15)	2 (6)	0 (0)
No displacement of distal remnant*	19 (24)	19 (48)	1 (3)	0 (0)
<b>Partial avulsion of femoral origin:</b>				
Lateral displacement of distal remnant	10 (12)	1 (3)	7 (22)	2 (25)
Anterior displacement of distal remnant	23 (29)	3 (8)	15 (47)	5 (63)
No displacement of distal remnant*	11 (14)	3 (8)	7 (22)	1 (13)
Complete avulsion of femoral origin	0 (0)	0 (0)	0 (0)	0 (0)

Data are reported as mean SD (standard deviation) or count (proportion);

For the 2 participants with missing 3 month MRI data, ACLOAS scores were estimated using ACLOAS scores from 6 month MRI (70 out of 75 (93%) participants with 6 months MRI data had the same ACLOAS score at 3 and 6 months)

\*ACL distal remnant remains inside the boundaries of the intercondylar notch;

PRP=platelet-rich plasma; MCL=medial collateral ligament; PLC=posterior lateral corner;



**Table 2. Participant outcomes**

	All participants (n=80)	Evidence of ACL healing on 3 month MRI		
		ACLOAS Grade 1 (n=40)	ACLOAS Grade 2 (n=32)	ACLOAS Grade 3 (n=8)
Lysholm Scale score	95 (89 to 100)	98 (94 to 100)	91 (81 to 100)	95 (87 to 100)
ACL-QOL score (total)	80 (69 to 93)	89 (76 to 96)	70 (57 to 76)	76 (66 to 95)
Symptoms / physical complaints	94 (86 to 98)	96 (92 to 100)	88 (82 to 96)	88 (75 to 96)
Work related concerns	98 (90 to 100)	100 (98 to 100)	93 (75 to 99)	100 (98 to 100)
Rec and sport participation	68 (54 to 91)	82 (65 to 93)	58 (38 to 73)	65 (44 to 90)
Lifestyle	88 (74 to 98)	94 (86 to 100)	77 (59 to 88)	88 (73 to 98)
Social and emotional	78 (58 to 94)	90 (72 to 94)	60 (44 to 79)	73 (63 to 97)
3 month Lachman test				
No SSD	64 (80)	40 (100)	23 (72)	1 (12.5)
End point with SSD	15 (19)	0 (0)	9 (28)	6 (75)
No endpoint	1 (1)	0 (0)	0 (0)	1 (12.5)
6 month pivot-shift test				
Normal	44 (58)	33 (85)	11 (37)	0 (0)
Glide	31 (41)	6 (15)	18 (60)	7 (100)
Jerk	1 (1)	0 (0)	1 (3)	0 (0)
Missing, n	4	1	2	1
Return to pre-injury level of sport at 12 months				
Yes	59 (79)	36 (92)	20 (71)	3 (37.5)
No	16 (21)	3 (8)	8 (29)	5 (62.5)
N/A (crossed-over to ACLR before eligible to RTS)	n=5	n=1	n=4	n=0
Underwent arthroscopic surgery	2 (3)	1 (3)	1 (3)	0 (0)
ACL re-rupture	11 (14)	4 (10)	7 (22)	N/A

For n=2 who did not have an MRI at 3 months, 6 month MRI results are reported (93% of participants had the same ACLOAS score at 3 and 6 months)

Missing data from n=1 for the Lysholm Scale and ACL-QOL (ACLOAS Grade 2)

Non-normally distributed data are presented as median (IQR)

SSD=side to side difference; N/A=not applicable; ACLR=anterior cruciate ligament reconstruction; RTS=return to sport



#### Appendix 4. ACLOAS Grades on MRI at 3 and 6-month follow-up (complete case analysis)

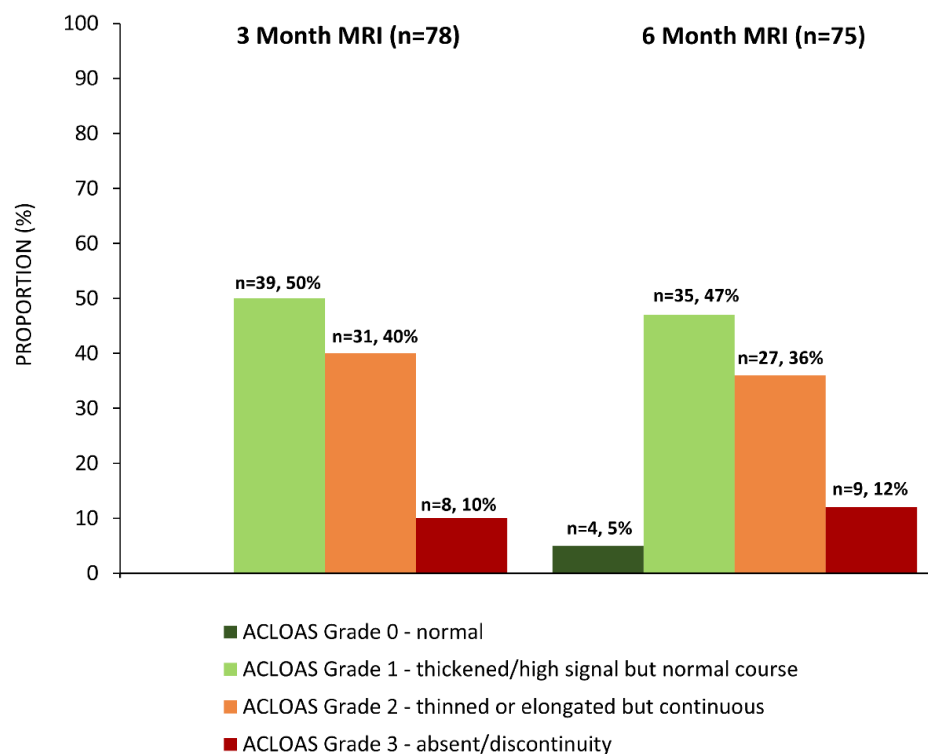


Figure 1: MRI evidence of ACL healing at 3- and 6-month follow-up

There is missing data from n=2 at 3 months (decided not to undergo MRI, n=2), and n=6 at 6 months (due to ACL re-rupture (n=3), pregnancy (n=1), or decided not to undergo MRI (n=2))

## Appendix 5. Patient-reported outcome scores based on time since injury and healing status on 3-month MRI

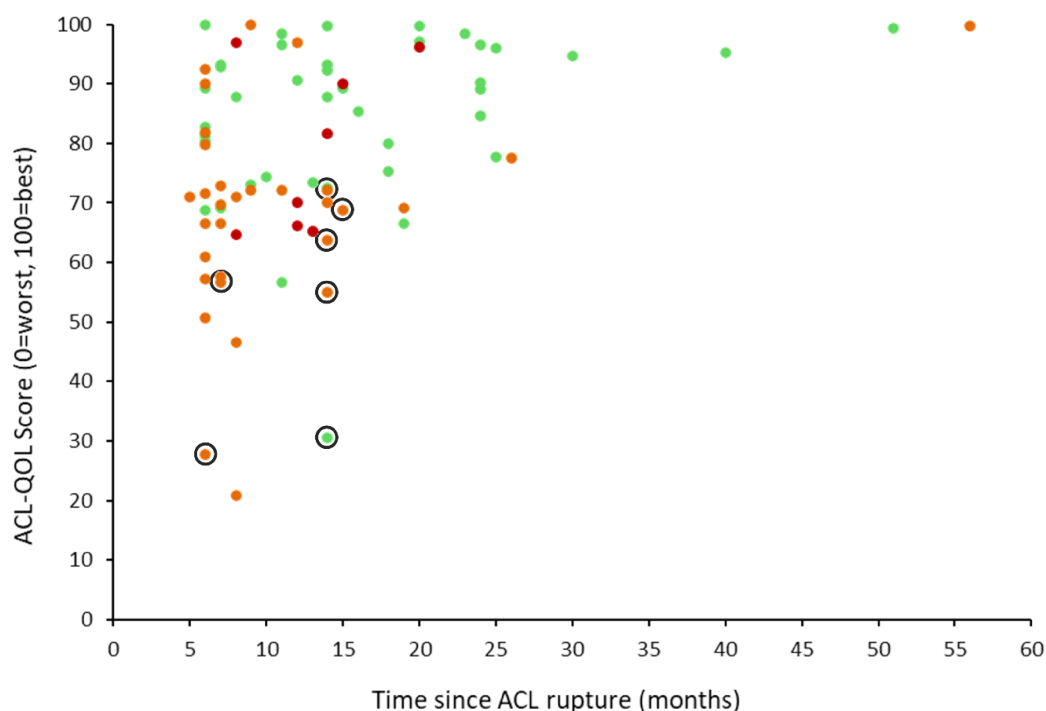


Figure 1. Knee-related quality of life (ACLQOL) depicted over time since ACL rupture and by healing status on 3 month MRI

Green markers = ACLOAS Grade-1 (thickened / high signal but normal course) on 3 month MRI;

Orange markers = ACLOAS Grade-2 (thinned or elongated but continuous) on 3 month MRI;

Red markers = ACLOAS Grade-3 (absent / discontinuity) on 3 month MRI;

Black circles = indicate participants who completed the ACLQOL after re-rupturing their ACL (range: 25 to 286 days after re-injury, n=4 had undergone ACLR 3-4 months before completing the ACLQOL);

There is missing ACLQOL data from 1 participant (ACLOAS score of 2)

The 4 participants who completed patient-reported outcomes 30 to 56 months post-injury, were the first 4 patients to undertake the CBP (the only patients to undertake the CBP between March 2016 and April 2019)

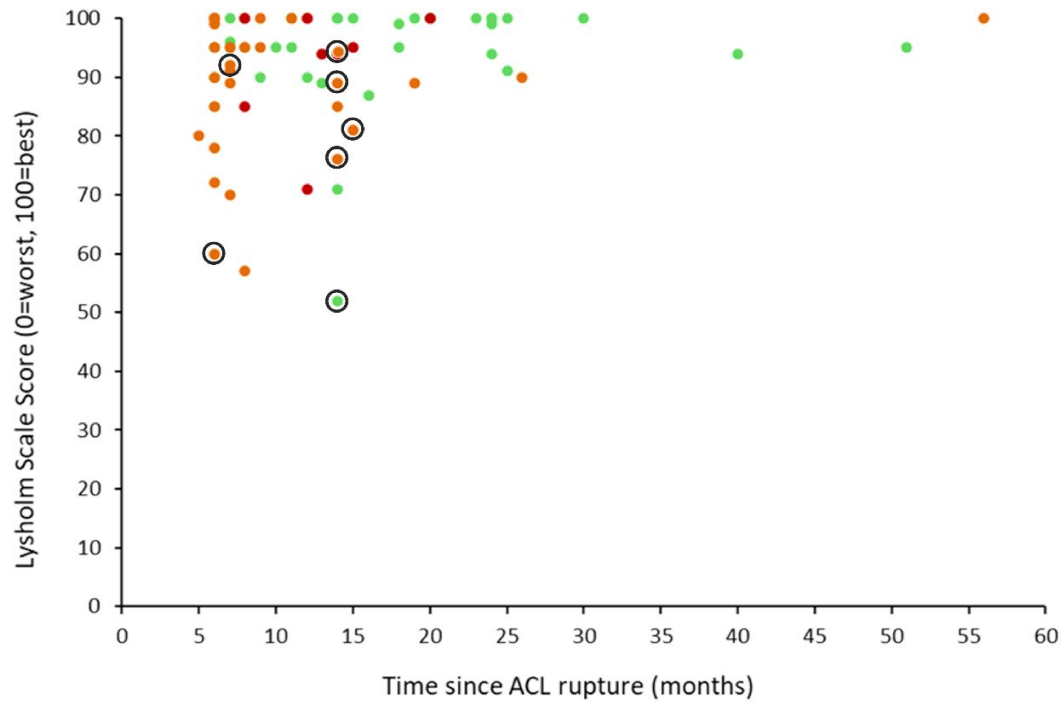


Figure 2. Patient-reported knee function (Lysholm Scale) depicted over time since ACL rupture and by healing status on 3 month MRI

Green markers = ACLOAS Grade-1 (thickened / high signal but normal course) on 3 month MRI;

Orange markers = ACLOAS Grade-2 (thinned or elongated but continuous) on 3 month MRI;

Red markers = ACLOAS Grade-3 (absent / discontinuity) on 3 month MRI;

Black circles = indicate participants who completed the ACLQOL after re-rupturing their ACL (range: 25 to 286 days after re-injury, n=4 had undergone ACLR 3-4 months before completing the ACLQOL);

There is missing Lysholm Scale data from 1 participant (ACLOAS score of 2)

Lysholm Scale scores can be interpreted as “excellent” = 95 to 100 points; “good” = 84 to 94 points, “fair” = 65 to 83 points, or “poor” = less than 65 points;

The 4 participants who completed patient-reported outcomes 30 to 56 months post-injury, were the first 4 patients to undertake the CBP (the only patients to undertake the CBP between March 2016 and April 2019)